

## Wynchgate, London, N14 6RP

Unique Estates are pleased to offer this spacious five bedroom house to let situated in a sought after road in Southgate, the property benefits from a large front driveway offering parking for multiple vehicles, 3 reception rooms, a large kitchen/diner, separate utility room, downstairs WC, upstairs comprises of 5 bedrooms and 2 family bathrooms, double glazed windows, gas central heating, a private, mature and spacious rear garden and is located within walking distance to Southgate underground train station (piccadilly line), close to local shops and sought after primary and secondary schools.

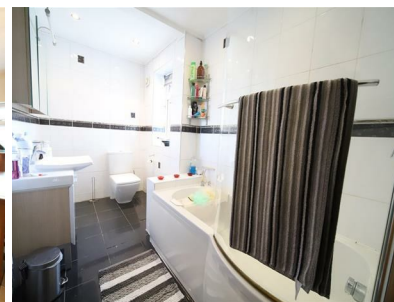


**£5,000 Per month**

**11 Onslow Parade, Hampden Square, Southgate, N14 5JN Telephone: 0208 804 5050**

Email: [info@uniqueestates.co.uk](mailto:info@uniqueestates.co.uk) Web: [www.uniqueestates.co.uk](http://www.uniqueestates.co.uk)

Unique Estates Property Services Limited is a company registered in England 06392784 established in 2007, registered office 122 St Pancras Way, London, NW1 9NB.  
Our company is members of TPO (The property ombudsman service), DPS, OFT approved code and registered with ICO



The property Misdescriptions Act 1991

Unique Estates Property Services are not qualified surveyors and this report is a description of what items are in the property. Please note Unique Estates Property Services do not test appliances or any fixtures, fittings, effects or services. A buyer is advised to obtain verification from their solicitor/surveyor for the above. The agent has not had sight of the title documents and references to the tenure of the property are based on information supplied by the vendor and should be verified by the buyers solicitors. All room sizes have been measured using an electronic sonic tape device, the accuracy of which cannot be guaranteed. Items shown in the photographs are not included unless arranged through the vendor and buyers solicitors. You are advised to make your own checks before contemplating a purchase, especially if exact measurement is of particular importance to you.